

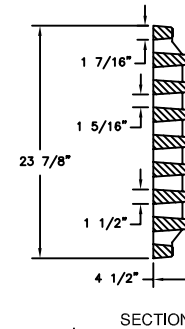
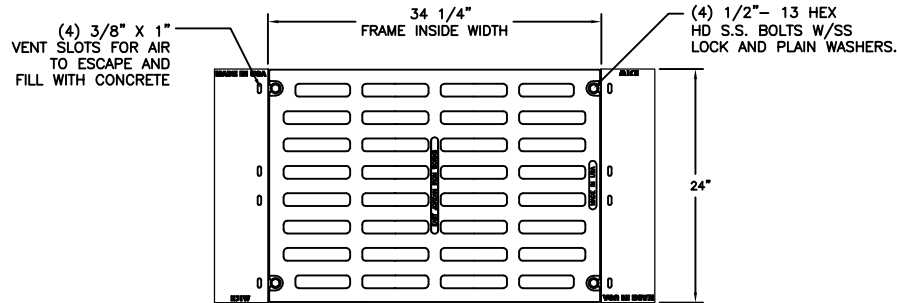
# 6900Z4 6910M2 Assembly

Supplied By:

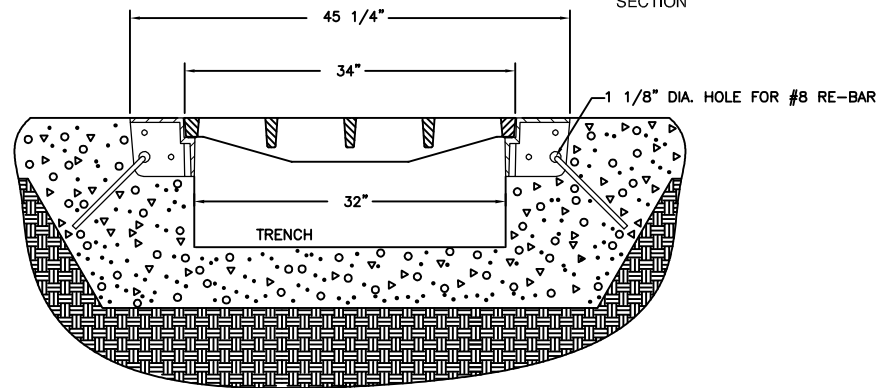
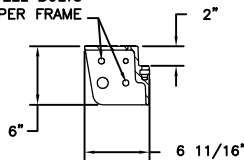
**TRENCHDRAIN**  
SUPPLY  
877-903-7246



www.trenchdrainsupply.com



5/8" DIA. HOLES FOR 1/2" STEEL BOLTS  
(4) PLACES PER FRAME



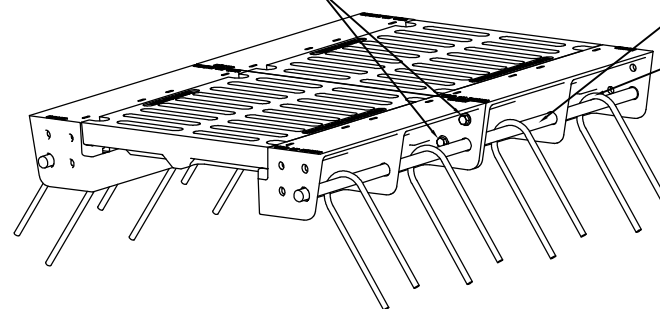
1/2" STEEL BOLTS SHOULD BE FINGER TIGHT TO KEEP FRAMES TRUE (SUPPLIED BY OTHERS)

#8 RE-BAR (SUPPLIED BY OTHERS)

#4 RE-BAR (SUPPLIED BY OTHERS)

**CAUTION:**  
DO NOT DISASSEMBLE BOLTED GRATES.  
CHECK FRAME WIDTH INSIDE BEFORE  
SETTING SECTIONS IN CONCRETE.

NOTE: PALLETIZE WITH WOOD BLOCKING SO GRATES ARE SUPPORTED AND STAY FLUSH AND PARALLEL WITH TOP SURFACES OF SIDE FRAMES. ENDS OF SIDE FRAMES MUST BE PARALLEL AND IN-LINE. GRATE MUST NOT EXTEND PAST ENDS OF SIDE FRAMES. GRATE MUST BE FLUSH OR BACK SLIGHTLY. CHECK BOTH ENDS OF ASSEMBLY WITH STRAIGHT EDGE. DOUBLE BAND PALLET, BOTH DIRECTIONS WITH HEAVY STEEL BANDING. DO NOT SHRINK WRAP.



REF VIEW FOR ASSEMBLY  
PURPOSES ONLY  
MAY NOT REPRESENT  
ACTUAL GRATE LISTED.

## Product Number

00691046B02

## Design Features

- Materials
  - Trench Rail
  - Gray Iron (CL35B)
  - Trench Grate
  - Ductile Iron (70-50-05)

- Design Load
  - Airport Extra Heavy Duty
- Open Area
  - 276 sq. inches
- Coating
  - Dipped
  - √ Designates Machined Surface

## Certification

- ASTM A48
- ASTM A536
- Country of Origin: USA

## Major Components

00690019  
00691046

## Drawing Revision

1/22/2013 Designer: DAE  
11/22/2013 Revised By: DEF

## Disclaimer

Weights (lbs./kg) dimensions (inches/mm) and drawings provided for your guidance. We reserve the right to modify specifications without prior notice.

CONFIDENTIAL: This drawing is the property of EJ GROUP, Inc., and embodies confidential information, registered marks, patents, trade secret information, and/or know how that is the property of EJ GROUP, Inc. Copyright © 2012 EJ GROUP, Inc. All rights reserved.

## Contact

800 626 4653  
ejco.com